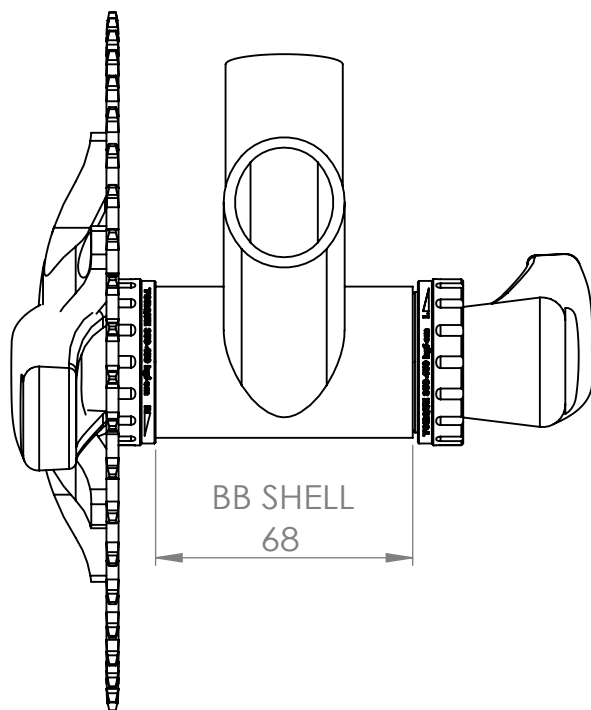
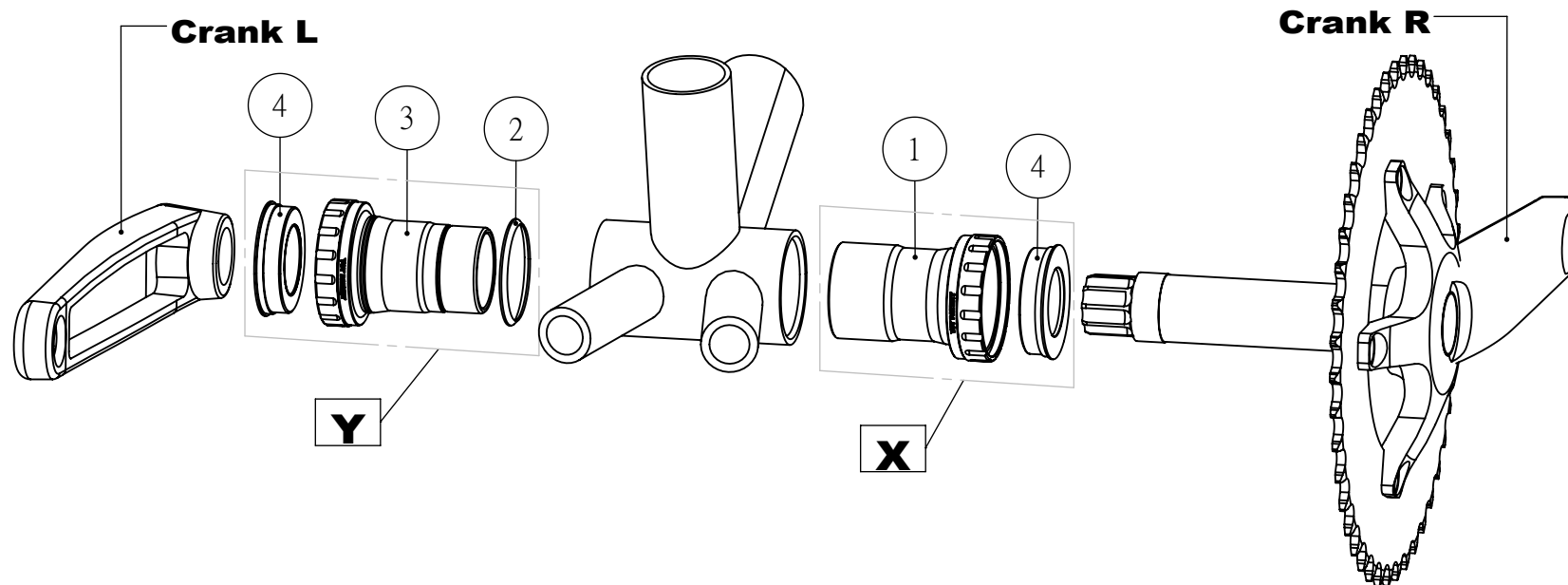


YST BB-0901(SRAM)

Instruction: (Please refer to above drawing.)

- 1. There are 7 items, total 9 pieces in one package.**
- 2. All parts are assembled together except #3 & 5.**
- 3. Disassemble #1 and #2 into "X" & "Y".**
- 4. Install "X" & "Y" into BB Shell, Then tighten #1 & 2 with hand.**
- 5. Tighten #1 & 2 with Torque Wrench by 350~450kgf-cm.**
- 6. Disassemble #4 from "Y".**
- 7. Install Crank R into "X".**
- 8. Put #5 into "Y". #5 are optional for distance adjustment of #4 between "X" & "Y".**
- 9. Assemble #6 into #4, Then press #4 into #3.**
- 10. Install Crank L onto ISIS axle, Then tighten Crank L with bolt.**



YST BB-0901(SHIMANO)

Instruction: (Please refer to above drawing.)

- 1. There are 5 items, total 7 pieces in one package.**
- 2. Disassemble #1 and #3 into "X" & "Y".**
- 3. Install "X" & "Y" into BB Shell, Then tighten #1 & 2 with hand.**
- 4. Tighten #1 & 2 with Torque Wrench by 350~450kgf-cm.**
- 5. Install Crank R through "X" & "Y".**
- 6. Install Crank L onto ISIS axle, Then tighten Crank L with bolt.**
- 7. Rotate crank to ensure bearing works smoothly.**